

# EFFORT WHEEL

A running wheel with adjustable rotation rates and selectable durations. It allows the study of intense physical effort in rodents, modeling intensive sports and their effects on the body

- Research on muscle fatigue, stress studies
- Modeling of the sports activity
- Adjustable rates of motor activity
- Consequences of physical effort



## PURPOSE

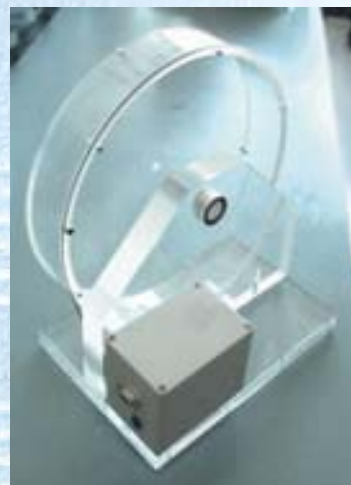
Modelling intense sports activities using rodents, research on muscle fatigue, stress studies, etc.

## PRODUCT DESCRIPTION

The wheel is controlled by a motor and tachogenerator combination for mice or other small rodents and is connected to a PC for data collection.

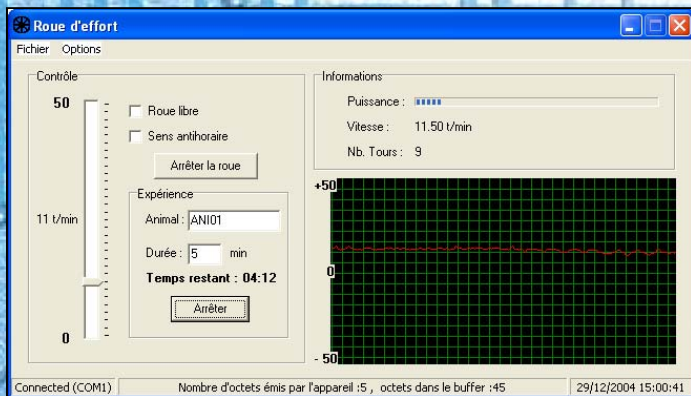
## PRINCIPLE

The wheel turns at a constant, adjustable rate, requiring the animal to exert itself at a consistent and specific daily level. It can also be operated without the motor, allowing the PC to measure the animal's activity in real time or non-real time, according to the desired sampling method.



## SOFTWARE

- Programs speed, wheel direction, and rotation rate
- Real-time monitoring
- Records animal activity to a file



Computer basic configuration.  
Computer and software delivered ready to use.

## GENERAL SPECIFICATIONS

- Speed: 0 to 25 rotations/minute
- Forward/reverse directions
- Programmable ascent and descent slope speed
- Dimensions: 30 x 19 x 35 (L x W x H cm)
- Corridor width: 5 cm
- Wheel diameter: 30 cm
- Rotation count using Hall effect probe
- Power supply: CE 15-V standard charger
- Connector: RS-232 compliant

**INTELLIBIO**

*Innovating for laboratories*

10 rue de Villers • 54000 Nancy - FRANCE

Ph: 33 (0)3 83 28 16 04 - Fax: 33 (0)3 83 90 11 58 • E-mail: [contact@intelli-bio.com](mailto:contact@intelli-bio.com) • [www.intelli-bio.com](http://www.intelli-bio.com)