

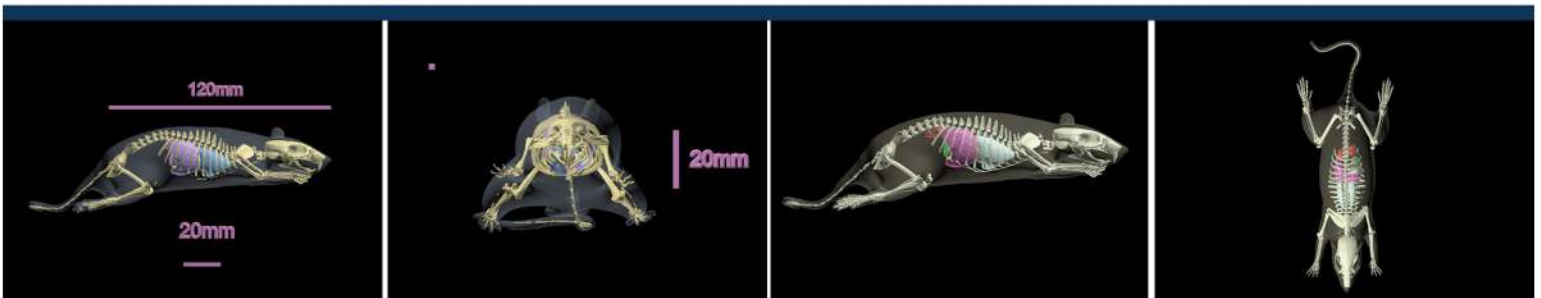
Rat Phantoms for X-Ray CT/MRI

The Rat Phantoms (Anatomical & Sectional models) are designed based on the average anatomy of a rat. they can used for medical iamging research, development, testing, and calibration-related work. RT-A01 is compatible with X-Ray CT, and MRI. RT-C04 is compatible with X-Ray CT and is sliced into four 5 mm thick segments with anatomical structures and organs present inside.



Anatomy:

- Complete Skeleton
- Heart
- Lungs
- Diaphragm
- Liver
- Kidneys
- Pancreas
- Spleen



Materials Used:

- Soft tissue and organs: Composition of urethane-based soft resin
- Synthetic bones: Patented ceramic-reinforced epoxy-based composite material

Size & Weight:

- Shipment: 10 x 8 x 6 in, 3 Lbs
- Includes Hard Carry Case